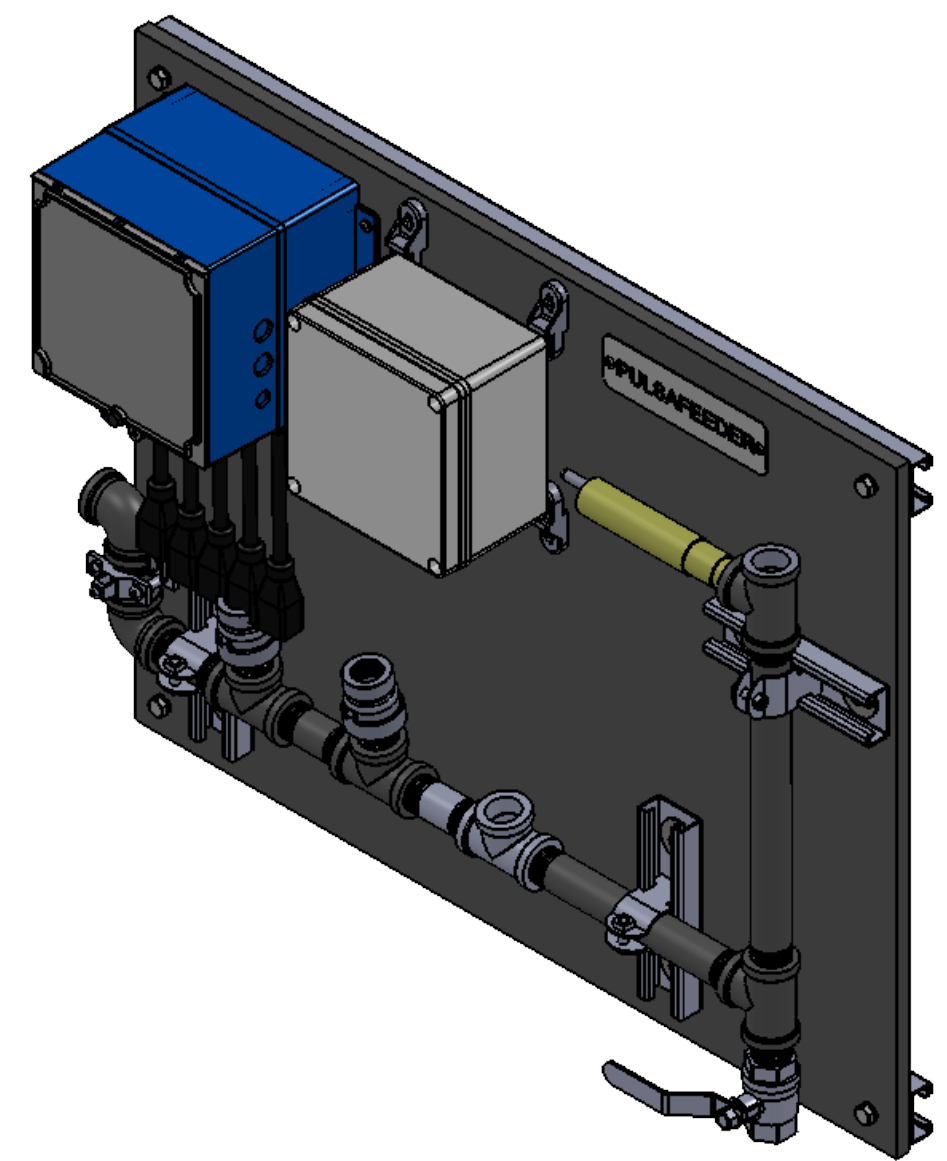
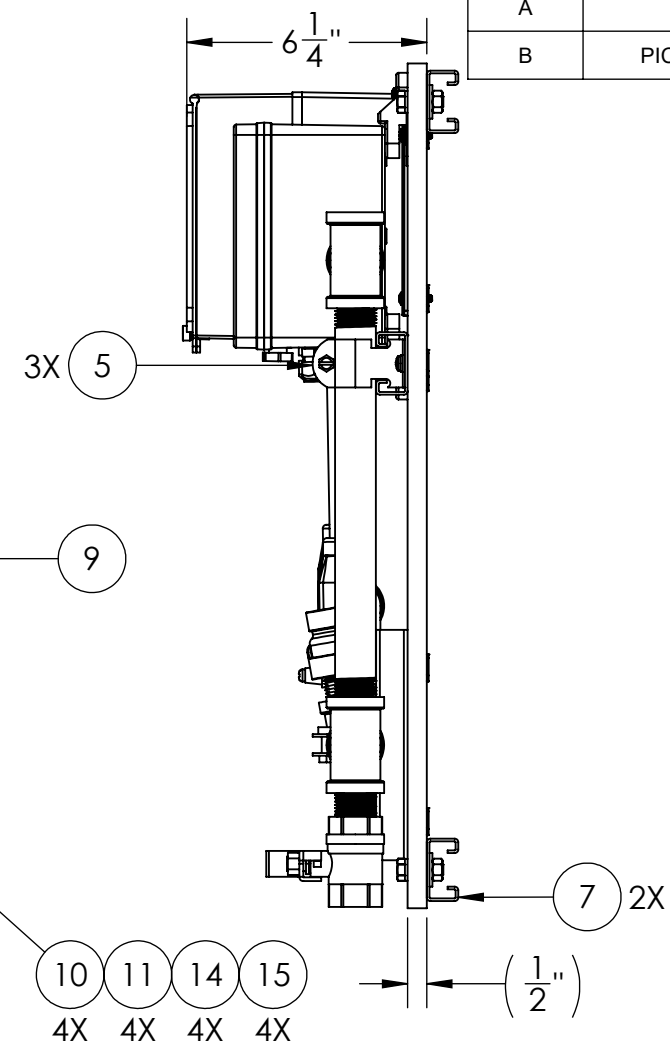
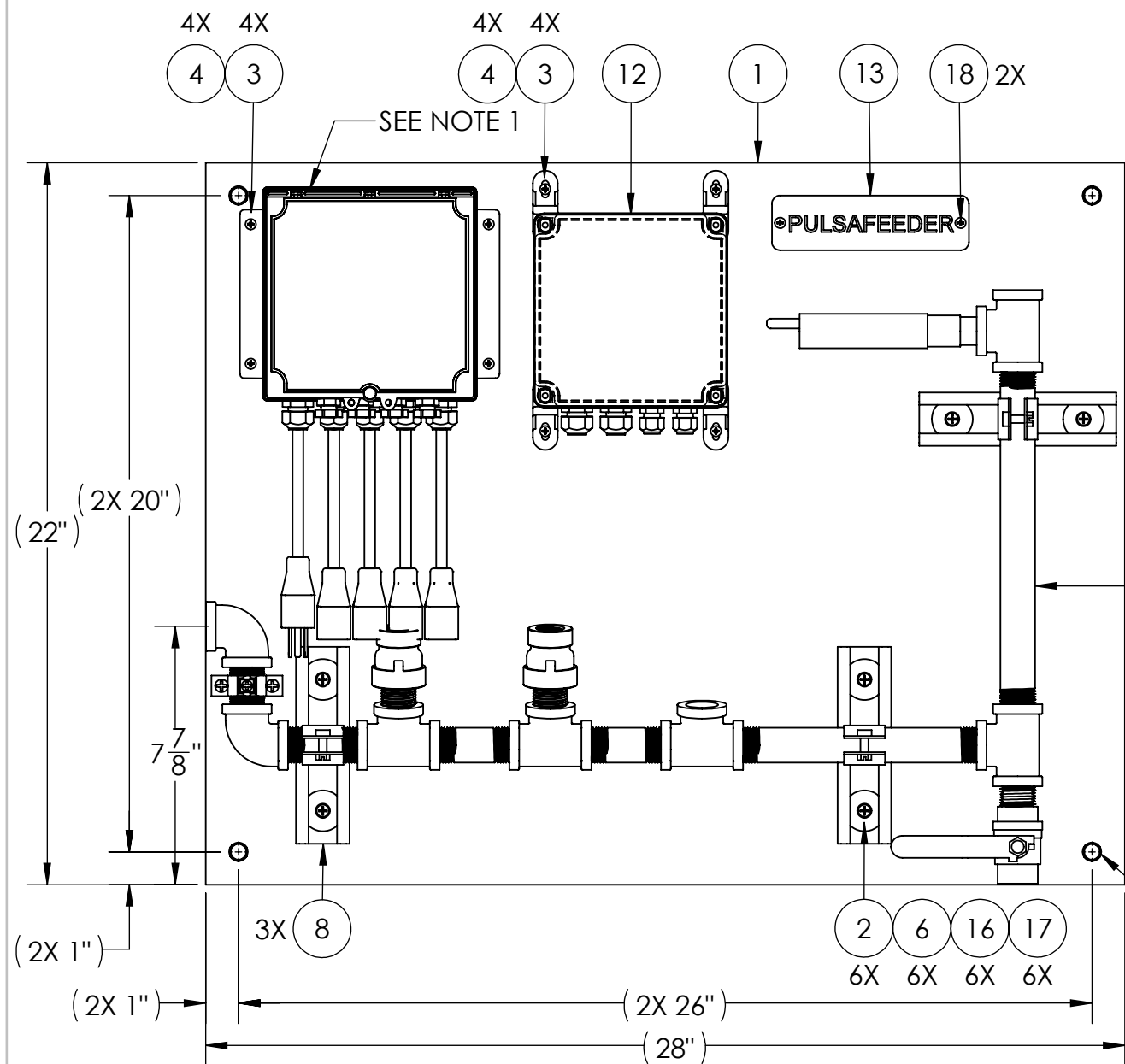


REV.	DESCRIPTION	DATE	MOD	CHK'D
A	INITIAL RELEASE	2/20/2019	WPM	FP
B	PICTURE ASSEMBLY UPDATE PER ECN 1849	8/2/2019	WPM	EH



BILL OF MATERIALS			
ITEM NO.	PART NUMBER	DESCRIPTION	QTY.
1	02-301-13	PANEL,22X28,POLYETHYLENE	1
2	06-011-02	TEE NUT,10-32,.24BARREL,3PRONG	6
3	06-011-05	TEE NUT,8-32,.22BARREL,3PRONG	8
4	06-162-01	SCR,8-32X.75,PHIL PAN HD,SS188	8
5	06-189-01	CLAMP,PIPE(ELECTO-GALVANIZED)	3
6	06-300-34	WASHER(SST),5/16 FLAT,1 1/4 OD	6
7	11-082-06	RAIL(P-GALV) UNISTR (28")	2
8	11-082-07	RAIL(P-GALV) UNISTR (6")	3
9	15-200-24	PIPING ASY,MVEX,HI PRESS,CPO	1
10	21411	BOLT(SST), .31-18 X 1.0-LG HEX	4
11	42053	WASHER(SST), .31"-ID FLAT	4
12	72-901-15	PWR,ASSEM,COND(SR01 PROBE)	1
13	J25334	LABEL(LEXAN), LOGO NAMEPLATE	1
14	J32944	NUT(SST), .31-18 X .27 HEX	4
15	J42052	WASHER(SST),.31-LOCK,SPLIT	4
16	L9801300-188	WASHER(SST), #10-FLAT	6
17	L9806300-188	SCR,#10-32X.62 PAN HD PHIL	6
18	U0900857	SCR(SST),6-20 X.38 TYPE-BT PHP	2

NOTES:

1. CONTROLLER CONFIGURATION TO BE SPECIFIED ON CUSTOMER DRAWING.
2. REWORK P/N 72-901-14 PER DRAWING 72-901-14-1.

INTERPRET GEOMETRIC TOLERANCING PER ASME Y14.5M-1994 UNLESS OTHERWISE SPECIFIED	
TOLERANCE	MACHINED SURFACES ROUGHNESS
X.X"	± .050"
X.XX"	± .015"
X.XXX"	± .005"
ANGLES	± 0°30'
BREAK ALL SHARP EDGES .015" MAX. ALL DIMENSIONS IN INCHES	

DWN	WPM	02/20/2019
CHK	FP	02/20/2019
UNCONTROLLED WHEN PRINTED-USER IS RESPONSIBLE TO VERIFY REVISION LEVEL OF THIS DOCUMENT PRIOR TO USE.		
PROPRIETARY DATA: THIS DOCUMENT DISCLOSES INFORMATION AND DATA IN WHICH PULSAFEEDER HAS PROPRIETARY RIGHTS. THE RIGHT TO REPRODUCE, USE OR DISCLOSE IN WHOLE OR IN PART EXCEPT BY WRITTEN PERMISSION IS PROHIBITED.		

PULSAFEEDER IDEX CORPORATION

TITLE
PANEL ASY,MVEX,HI PRESS,CPOX

REV **B** SIZE **B** DWG NO **15-100-24**

FILE **15-100-24** SCALE: 1:5 SHEET **1** OF **1**